

CLR Formulation Concepts

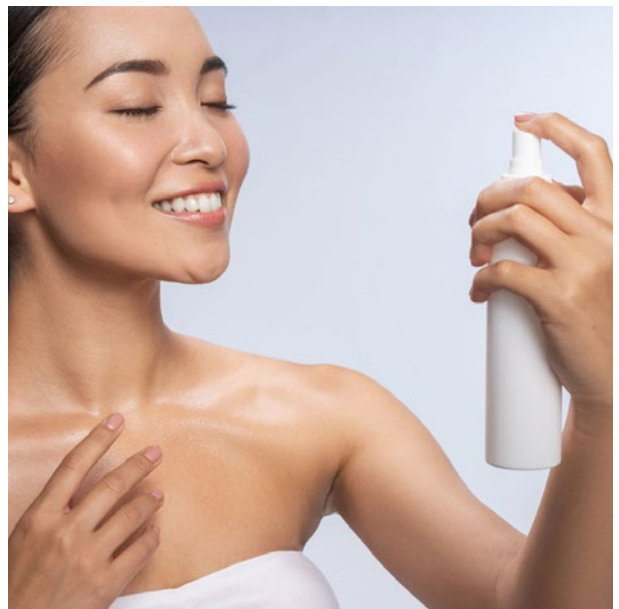
Pre-Sun Gel to Water Spray

The **Pre-Sun Gel** presents itself as a light, cooling gel in a bottle. Once applied to the skin, it magically transforms into a silky, watery fluid. Our unique formula quickly penetrates the skin for instant, intense hydration. Your skin will feel refreshed and hydrated.

MultiMoist CLR™ compensates for a lack of vitamin D, promotes epidermal differentiation and provides the skin with a healthy level of hydration and smoothness. **Phytosan™ K** has regenerating effects and helps by enabling to better deal with external stresses.

Directions for use:

Spray all over the parts of the body and gently massage into the skin.



Featured Products

MultiMoist CLR™ – Mapping the moisturization puzzle



MultiMoist CLR™ activates production of the vitamin D receptor (VDR) and promotes the VDR's activation. MultiMoist CLR™ also potentiates the effect of vitamin D. As a consequence the skin becomes more moisturized. By making use of 5 different objective instrumental approaches, the immediate and long term moisturizing properties of MultiMoist CLR™ were convincingly proven. Additionally, the activity of MultiMoist CLR™ was proven in a consumer study, where the subjective improvement of skin moisture content, skin smoothness and the look of skin were confirmed.

MultiMoist CLR™ consists of a powerful synergistic blend of fructooligosaccharides and beta vulgaris (beet) root extract.

Dosage: 3.0%
pH range: 3.0–8.0

INCI Name:
Fructooligosaccharides, Beta Vulgaris (Beet) Root Extract, Water

MultiMoist CLR™
is unpreserved.

Phytosan™ K – Multiple pathway approach to skin aging



Phytosan™ K exerts a potent influence against skin aging. It activates cellular repair processes, supporting the maintenance of cellular integrity and energy after UV irradiation. Both are important factors in counteracting photoaging.

Phytosan™ K also has potent regenerative effects, such as stimulation of collagen synthesis. This results in improved skin firmness and smoothness and a reduction of wrinkle depth. Phytosan™ K counteracts biological and UV-induced premature aging of the skin.

Phytosan™ K contains proteins, glycoproteins and polysaccharides isolated from organic soybeans (GMO-free).

Dosage: 2.0–5.0%
pH range: 3.0–7.5

INCI Name:
Water, Glycerin, Glycine Soja (Soybean) Seed Extract

Phytosan™ K
is preserved with phenoxyethanol and potassium sorbate.

CLR Formulation

Pre-Sun Gel to Water Spray

II-54.385.01

| PHASE | TRADE NAME | INCI NAME | SUPPLIER | W/W % |
|-------|------------------------|--|------------|-------------|
| A | Deionized Water | Water | | ad 100 |
| | A-Leen 5 | Pentylene Glycol | Minasolve | 3.00 |
| | Viscarin PC 389 | Carrageenan, Glucose | DuPont | 1.00 |
| B | MultiMoist CLR™ | Fructooligosaccharides, Beta Vulgaris (Beet) Root Extract, Water | CLR | 3.00 |
| | Dermosoft OMP | Methylpropanediol, Caprylyl Glycol, Phenylpropanol | Evonik | 3.00 |
| | Dissolvine GL-38 | Tetrasodium Glutamate Diacetate, Water, Sodium Hydroxide | Nouryon | 0.05 |
| | Phytosan™ K | Water, Glycerin, Glycine Soja (Soybean) Seed Extract | CLR | 2.00 |
| C | NaOH (10%) | Water, Sodium Hydroxide | | q.s. |

Operating Instructions:

Mix A and stir until a homogeneous. Add B in this order and stir. Adjust pH value to 5.5 with C and mix until uniform.

Directions for use: Spray all over the parts of the body and gently massage into the skin.

The recommendations and formulations given are based on our knowledge and experience in the field of technical application. They are, to the best of our belief, correct, but are offered without obligation. Those who use our recommendations and formulations as well as those who process CLR Active Agents are themselves responsible for the adherence to prevailing statutory regulations and the observance of patent rights as well as other protective rights for other companies. This formula has been manufactured and stability-tested using a special preservative, but has not been subjected to microbiological challenge tests.

CLR

Chemisches Laboratorium Dr. Kurt Richter GmbH
Sperenberger Straße 3 · 12277 Berlin · Germany
Tel +49 30 851026-0 · Fax +49 30 851026-85
info@clr-berlin.com · www.clr-berlin.com

