

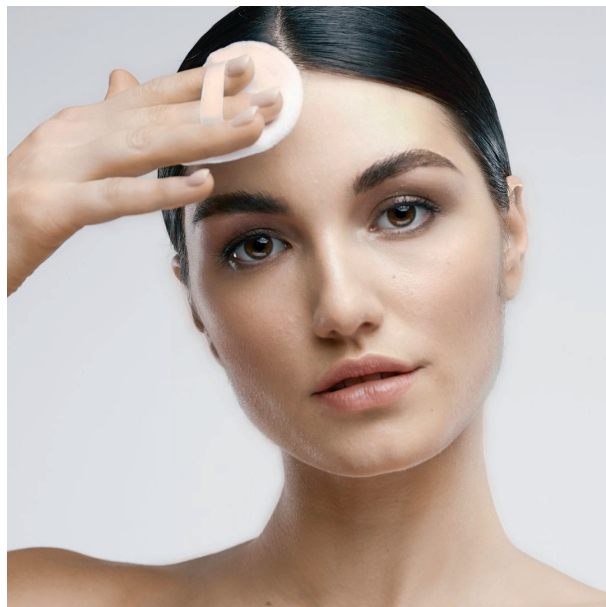
CLR Formulation Concepts

Come As You Are – Pore Refining Toner

The **Pore Refining Toner** provides skin with hydration and a refined texture. It reduces the visibility of skin pores and mattifies skin.

MultiMoist CLR™ will leave the skin with a well hydrated and smooth feeling. **CutiFine CLR™** constitutes an all-in-one approach to reduce conspicuous pores. It acts on all processes which make pores larger and more noticeable. It regulates the color of pores and refines skin texture and complexion with soft focus.

Directions for use: Moisten a cotton ball with the toner. Stroke over the face (except eye area) in the morning and preferably in the evening after cleansing. Always use SPF and limit sun exposure after using this product.



Featured Products

CutiFine CLR™ – The all-in-one skin refiner



CutiFine CLR™ refines skin texture and complexion with soft focus. Conspicuous skin pores are a great concern for consumers, especially for those who have oily and combination skin. As skin ages, skin pores become also more pronounced, making skin pores the latest anti-aging skincare goal for consumers and skincare brands alike.

Based on a synergistic combination of extracts of *Vaccaria segetalis* (Cowherb) and *Adansonia digitata* (Baobab) pulp, CutiFine CLR™ is an all-natural, safe and effective skincare active which goes to the core of the causes leading to conspicuous pores. It works on all important biological processes which lead to pore enlargement, but also reduces the color contrast of the pores with the surrounding skin, an until now largely overlooked but essential feature. CutiFine CLR™ constitutes an all-in-one approach to reduce the conspicuousness of pores.

Dosage: 3.0%

pH range: <6.5

INCI Name:

Water, Vaccaria Segetalis (Cowherb) Extract, Adansonia Digitata (Baobab) Pulp Extract

CutiFine CLR™ is stabilized with pentylene glycol and phenylpropanol.

MultiMoist CLR™ – Mapping the moisturization puzzle



MultiMoist CLR™ activates production of the vitamin D receptor (VDR) and promotes the VDR's activation. MultiMoist CLR™ also potentiates the effect of vitamin D. As a consequence the skin becomes more moisturized. By making use of 5 different objective instrumental approaches, the immediate and long term moisturizing properties of MultiMoist CLR™ were convincingly proven. Additionally, the activity of MultiMoist CLR™ was proven in a consumer study, where the subjective improvement of skin moisture content, skin smoothness and the look of skin were confirmed.

MultiMoist CLR™ consists of a powerful synergistic blend of fructooligosaccharides and beta vulgaris (beet) root extract.

Dosage: 3.0%
pH range: 3.0–8.0

INCI Name:
Fructooligosaccharides, Beta Vulgaris (Beet) Root Extract, Water

MultiMoist CLR™
is unpreserved.

CLR Formulation

Come As You Are – Pore Refining Toner

II-47.136.02A

PHASE	TRADE NAME	INCI NAME	SUPPLIER	W/W %
A	Deionized Water	Water		ad 100
	Zemea	Propanediol	DuPont Tate & Lyle	4.00
	A-Leen 5	Pentylene Glycol	Minasolve	3.00
	MultiMoist CLR™	Fructooligosaccharides, Beta Vulgaris (Beet) Root Extract, Water	CLR	3.00
	CutiFine CLR™	Water, Vaccaria Segetalis (Cowherb) Extract, Adansonia Digitata (Baobab) Pulp Extract	CLR	3.00
	Trisodium Citrate Dihydrate	Sodium Citrate	Merck	1.10
	Perfume Tilia WS	Fragrance	Voegele	0.20
B	Keltrol T Plus	Xanthan Gum	CP Kelco	0.11
C	Mandelic Acid	Mandelic Acid	R.L. Chemical Industries Pvt.	3.00
D	NaOH (32%)	Water, Sodium Hydroxide		q.s.

Operating Instructions:

Mix A and stir until uniform. Add B and C while stirring and adjust pH value to 4 with D.

Directions for use:

Moisten a cotton ball with the toner. Stroke over the face (except eye area) in the morning and preferably in the evening after cleansing. Always use SPF and limit sun exposure after using this product.

The recommendations and formulations given are based on our knowledge and experience in the field of technical application. They are, to the best of our belief, correct, but are offered without obligation. Those who use our recommendations and formulations as well as those who process CLR Active Agents are themselves responsible for the adherence to prevailing statutory regulations and the observance of patent rights as well as other protective rights for other companies.

This formula has been manufactured and stability-tested using a special preservative, but has not been subjected to microbiological challenge tests.

CLR

Chemisches Laboratorium Dr. Kurt Richter GmbH
Sperenberger Straße 3 · 12277 Berlin · Germany
Tel +49 30 851026-0 · Fax +49 30 851026-85
info@clr-berlin.com · www.clr-berlin.com

