

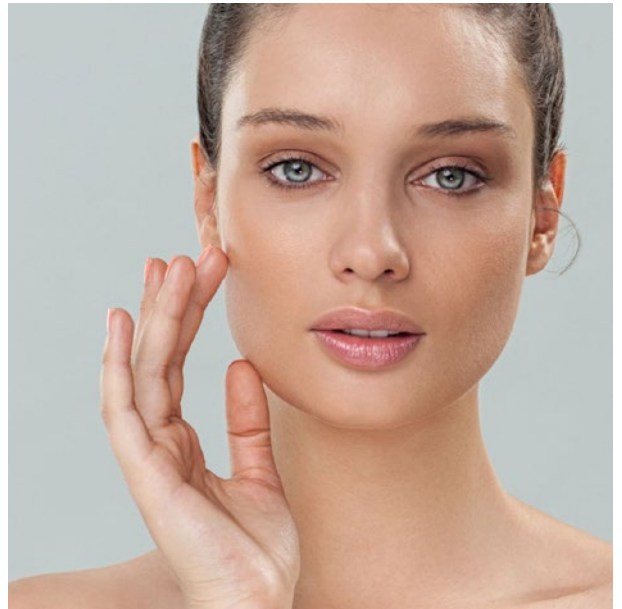
## CLR Formulation Concepts

## Happy Barrier Serum OW

Introducing our highly effective **Happy Barrier Serum OW**, a one-step solution to help you look your best! It is specially formulated to combat all signs of aging skin; this serum also delivers powerful repair benefits while providing essential moisture for your skin.

**CutiGuard CLR™** protects the skin cells from the main three influences on skin aging: external stress, internal stress and time. It reduces wrinkles and improves skin color evenness. **ProRenew Complex CLR™** works from the 'bottom up' and supports the biological mechanisms inside the skin which are responsible for its renewal processes. **G+C Complex CLR™** effectively activates anti-immunosuppressive processes on the cellular level and increases cellular repair mechanisms.

**Directions for use:** Take a pea-sized amount and gently massage into skin before bedtime.



### Featured Products

#### ProRenew Complex CLR™ – Postbiotic support for skin and its microbiota



ProRenew Complex CLR™ acts on essential features in the aging process of the skin, its ability to successfully adapt to a constantly changing environment and to effectively renew itself.

ProRenew Complex CLR™ positively influences the speed and quality of epidermal growth. It has shown to effectively promote desquamation, the shedding of dead cells. ProRenew Complex CLR™ is beneficial for both the health of skin and the skin microbiota. It balances and protects the skin microbiota and supports it in dealing with day-to-day stress.

**Dosage:** 3.0%  
**pH range:** 4.0–7.0

**INCI Name:**  
Lactococcus Ferment Lysate

**ProRenew Complex CLR™** is preserved with sodium benzoate.

Also available as **ProRenew Complex CLR™ NP**, stabilized with phenylpropanol and levulinic acid/sodium levulinate.

#### G+C Complex CLR™ – A postbiotic approach towards photoaging



G+C Complex CLR™ is a biotechnological anti-aging active, obtained from a lysate of probiotic bifidobacteria, which potently protects against UV-induced damage in the skin. UV radiation leads to skin cell damage and immunosuppression, a deactivation of the local immune system in the skin.

By effectively activating anti-immunosuppressive processes on the cellular level, G+C Complex CLR™ increases cellular repair and potently supports the skin's endogenous protection mechanisms. G+C Complex CLR™ thus counteracts premature skin aging, i.e. photoaging.

**Dosage:** 1.0–5.0%  
**pH range:** 3.8–7.0

**INCI Name:**  
Bifida Ferment Lysate

**G+C Complex CLR™** is preserved with sodium benzoate.

## CutiGuard CLR™ – Your Personal Guard



Based on the extremophile red alga *Galdieria sulphuraria*, CutiGuard CLR™ constitutes a refined approach to the first signs of skin aging. It transfers the adaptivity and resilience of *Galdieria sulphuraria* to a highly effective, natural active ingredient that protects the skin in stressful environments.

Skin aging starts in the skin cells, which, during a lifetime, accumulate damage. Extrinsic and intrinsic factors add damage, leading to prolonged inflammation and cell senescence. CutiGuard CLR™ reduces the number of senescent cells and associated inflammatory and destructive mediators which lead to visible skin aging. It thus protects skin against premature aging. CutiGuard CLR™ also reduces wrinkles and significantly improves skin smoothness as well as the evenness of skin color – three crucial factors for a healthy and young appearance.

With its proactive and preventive approach, CutiGuard CLR™ is extremely suitable for modern aging consumers. It slows down the skin aging process and helps to avoid the development of the first signs of skin aging.

**Dosage:** 3.0%  
**pH range:** 3.0–9.0

**INCI Name:**  
Betaine, Sucrose, Hydrolyzed Rhodophyceae Extract, Water

CutiGuard CLR™ is unpreserved.

### CLR Formulation

#### Happy Barrier Serum OW

I-4.138.10A

PHASE	TRADE NAME	INCI NAME	SUPPLIER	W/W %
A	Deionized Water	Water		ad 100
	Sepilife NUDE	Sodium Acrylate/Sodium Acryloyldimethyl Taurate Copolymer, C15-19 Alkane, Polyglyceryl-6 Laurate, Polyglycerin-6	SEPPIC	3.30
	Verstatil BL non GMO	Water, Sodium Levulinate, Sodium Benzoate	Evonik	3.00
	Zemea	Propanediol	Primient Covation LLC	4.00
B	ProRenew Complex CLR™	Lactococcus Ferment Lysate	CLR	3.00
	CutiGuard CLR™	Betaine, Sucrose, Hydrolyzed Rhodophyceae Extract, Water	CLR	3.00
	G+C Complex CLR™	Bifida Ferment Lysate	CLR	3.00
C	NaOH (32%)	Water, Sodium Hydroxide		q.s.
D	Perfume Criste Marine PMF WS	Fragrance	Voegele	0.10
	Puricolor Red ARE 33 FDA (0.4%)	Water, Acid Redd 33	BASF	q.s.

**Operating Instructions:** Mix A and stir until homogeneous. Add B in this order, one after another. Adjust pH value to 5.5-6 with C, if necessary. Add D as desired.

**Directions for use:** Take a pea-sized amount and gently massage into skin before bedtime.

The recommendations and formulations given are based on our knowledge and experience in the field of technical application. They are, to the best of our belief, correct, but are offered without obligation. Those who use our recommendations and formulations as well as those who process CLR Active Agents are themselves responsible for the adherence to prevailing statutory regulations and the observance of patent rights as well as other protective rights for other companies. This formula has been manufactured and stability-tested using a special preservative, but has not been subjected to microbiological challenge tests.

CLR

Chemisches Laboratorium Dr. Kurt Richter GmbH  
Sperenberger Straße 3 · 12277 Berlin · Germany  
Tel +49 30 851026-0 · Fax +49 30 851026-85  
info@clr-berlin.com · www.clr-berlin.com

